

  
**PROMINENCE**  
ESTATES



**RESIDENTIAL**  
PROPERTY EXPERTS

COVENTRY, WARWICKSHIRE  
& LEAMINGTON SPA

**MELVILLE ROAD,**  
COVENTRY, CV1 3AL

**£525 PCM**

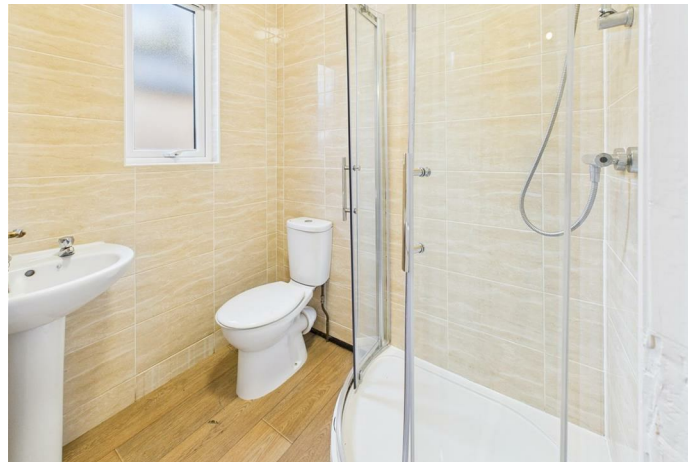


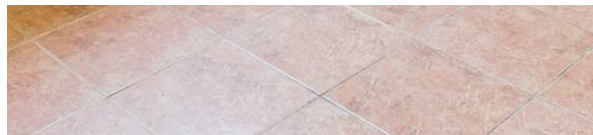
MELVILLE ROAD



**PROMINENCE**  
— ESTATES —

A newly refurbished and well-presented room is available now. now available in this spacious 5-bedroom shared house located on Melville Road in Coventry, offering an excellent option for single working professionals seeking a comfortable and modern place to live. The property has been fully redecorated throughout, featuring fresh contemporary decor, newly fitted carpets and brand-new furniture in both the bedrooms and communal areas, creating a clean, bright and welcoming environment. Residents share two modern bathrooms and have access to a functional communal kitchen that includes essential facilities such as a washing machine and a fridge freezer. With all bills included in the rent, this home provides a straightforward and cost-effective living arrangement in a desirable location close to local shops, transport links and major routes across Coventry. The room is









Prominence Estates  
5 Queen Isabels Avenue,  
Cheylesmore,  
Coventry,  
CV3 5GE

02476 309 826  
[lettings@prominenceestates.com](mailto:lettings@prominenceestates.com)  
[www.prominenceestates.com](http://www.prominenceestates.com)

  
**PROMINENCE**  
— ESTATES —